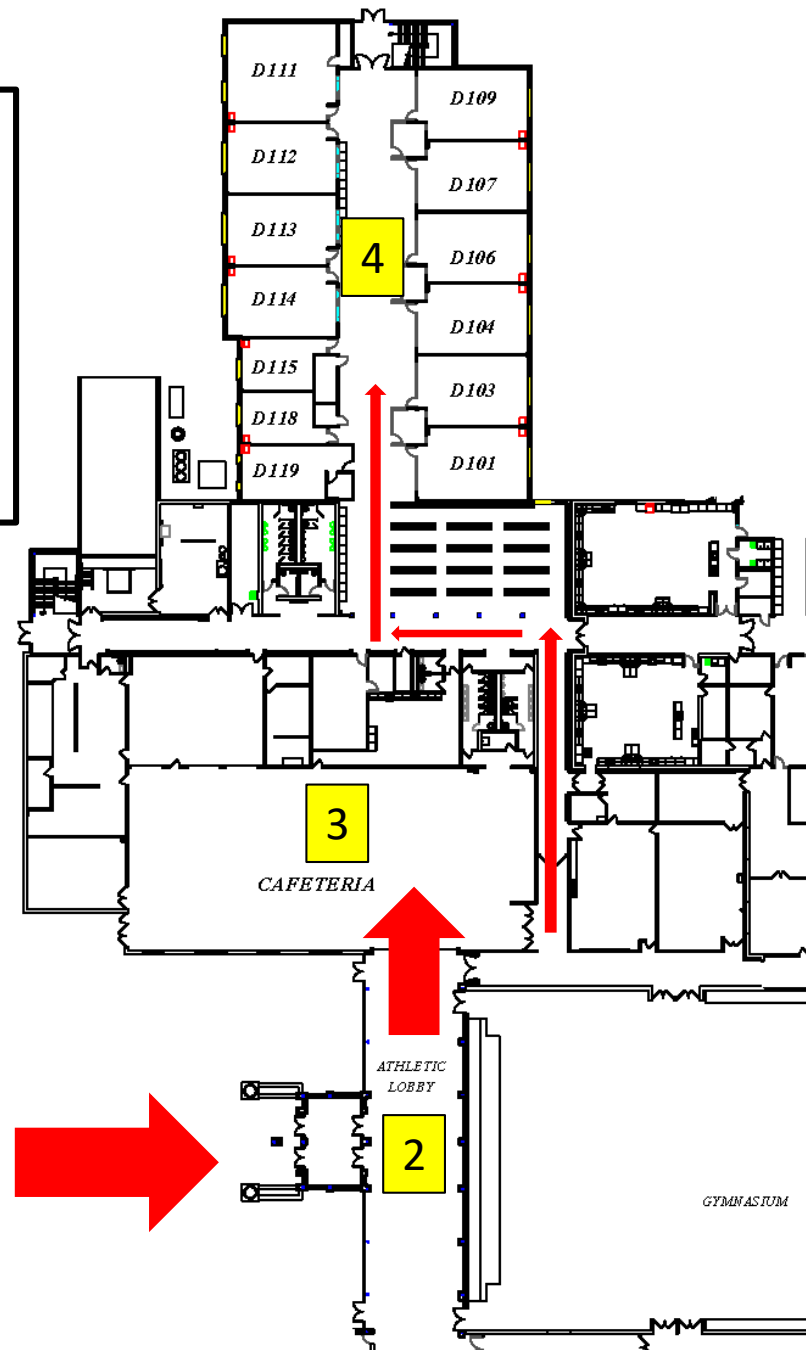


6th Grade Solo Night Map of Yorkville High School



1 ENTER
HERE
(Drive around to
back of high school)

1 Drop Off at Athletic Entrance
in the back of Yorkville High
School

2 Booths for:

- Ellman's Music
- Austin's Violin
- Yorkville Music Boosters

3 Band & Orchestra Warm-up
(You will be escorted to your
solo room by a student helper)

4 Perform your solo

- Band and Basses on 1st floor
- Orchestra on 2nd floor